

# THANKSGIVING JOKE

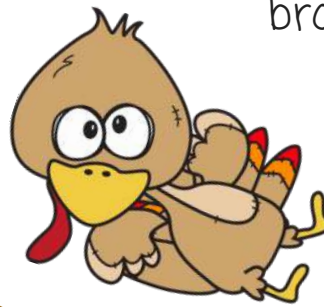
# LUNCHBOX NOTES

Clipart Licensed from Scrappin Doodles



What's the best thing to put in pumpkin pie?

A: Your teeth



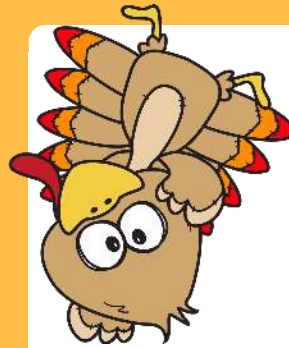
How do you fix a broken pumpkin?

A: With a pumpkin patch



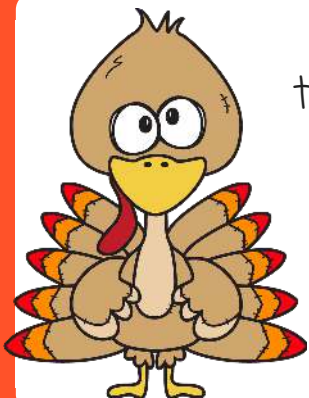
What always comes at the end of Thanksgiving?

A: The letter 'g'



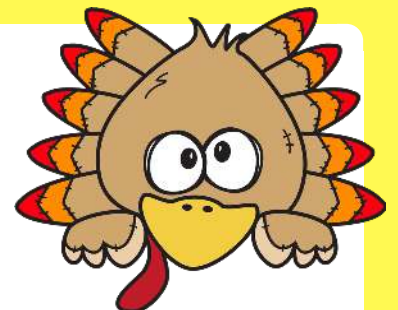
What did the big tree say to the little tree?

A: Leaf me alone!



Why was the turkey sent to the principal?

A: He used fowl language



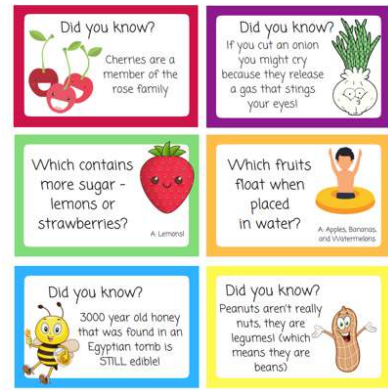
What's the most musical part of a turkey?

A: The drumstick

# WANT MORE LUNCHBOX NOTES? SEE MY SHOP:

THRIVINGONPALEO.COM

## FOOD FACT LUNCHBOX NOTES



See the Food Fact Lunchbox Notes at:

<https://thrivingonpaleo.com/foodfacts>

THRIVINGONPALEO.COM

## LOVE NOTES LUNCHBOX NOTES

CLIP ART LICENSED FROM ANGIEMAKES.COM



See the Love Note Lunchbox Notes at:

<https://thrivingonpaleo.com/lovenotes>